

AccuFIT9000

Data Convert Software

User's Manual

01 001RC

18.10

- * This User's Manual is stored in a PDF file on a CD-ROM. In order to read this manual, Adobe Acrobat 4.x or higher is needed.
- * Windows 7/8/8.1/10/ are registered trademarks of Microsoft Corporation in the U.S.
- * No copying or reproduction of this product in any way form, in part or in whole, is permitted without the written permission of Kanomax, Levitt Safety, or Accutec-IHS.
- * The contents of this User's Manual are subject to change without prior notice.

Table of Contents

1. General Overview	4
Overview of System	4
System Requirements.....	4
2. Installation.....	5
Installation.....	5
Starting and Exiting the Software	5
3. User Interface	6
Main Screen	6
4. Data Importing.....	7
5. Contact Information	14

1. General Overview

Overview of System

This is software to create database(s) which will be used in AccuFIT9000 (hereinafter referred to as the "Device") from a CSV file exported from the FitPro+Software.

System Requirements

Operating Systems: English, French, Spanish, Portuguese

Windows® 7/8/8.1/10 32-bit or 64-bit

.NET Framework: .NET Framework 3.5 or higher

USB ポート: Not Required.

Ethernet: Required. (To install .NET Framework 3.5, Ethernet may be necessary.)

Wi-Fi: Not required.

2. Installation

Installation

This software will be installed simultaneously when the software of AccuFIT9000 is installed.

To install and uninstall, please refer to the User's Manual of AccuFIT9000 software.

Starting and Exiting the Software

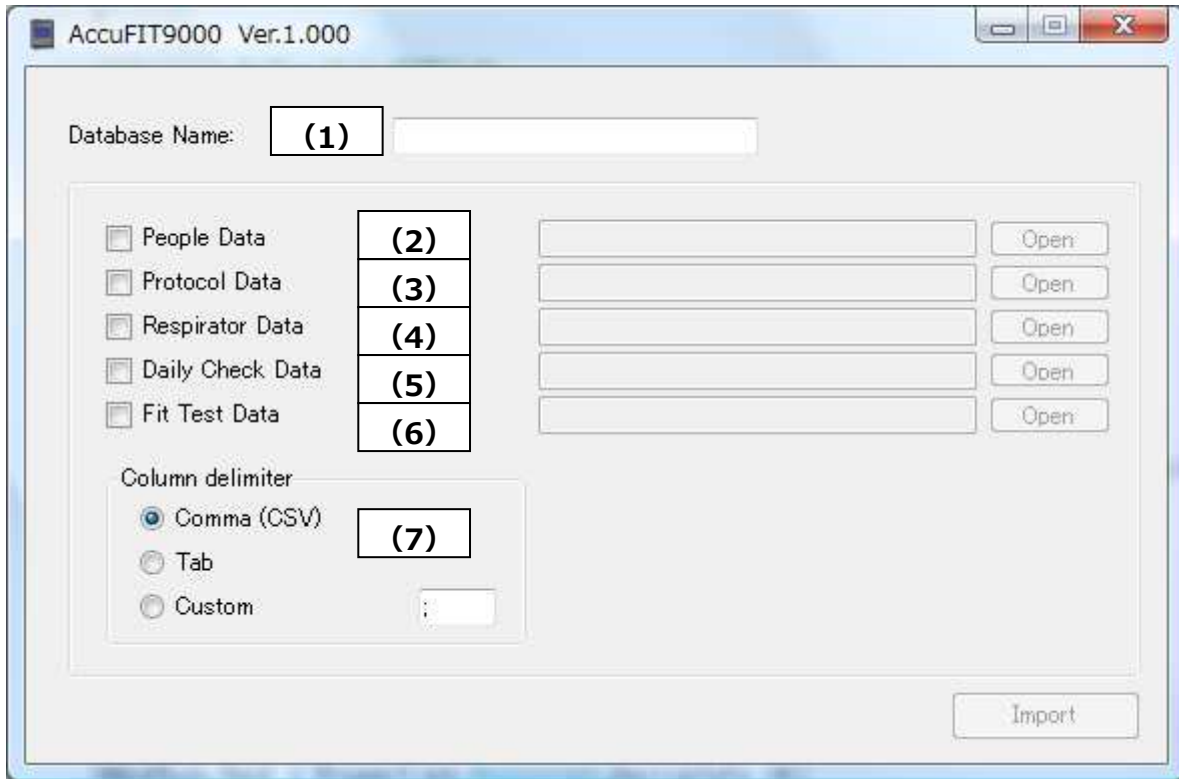
To start the Software, select **AccuFIT9000** on the **START** menu, and then click the **Data Convert Software** button.

To exit the Software, click "**X**" button on the title bar of the Main screen.

3. User Interface

Main Screen

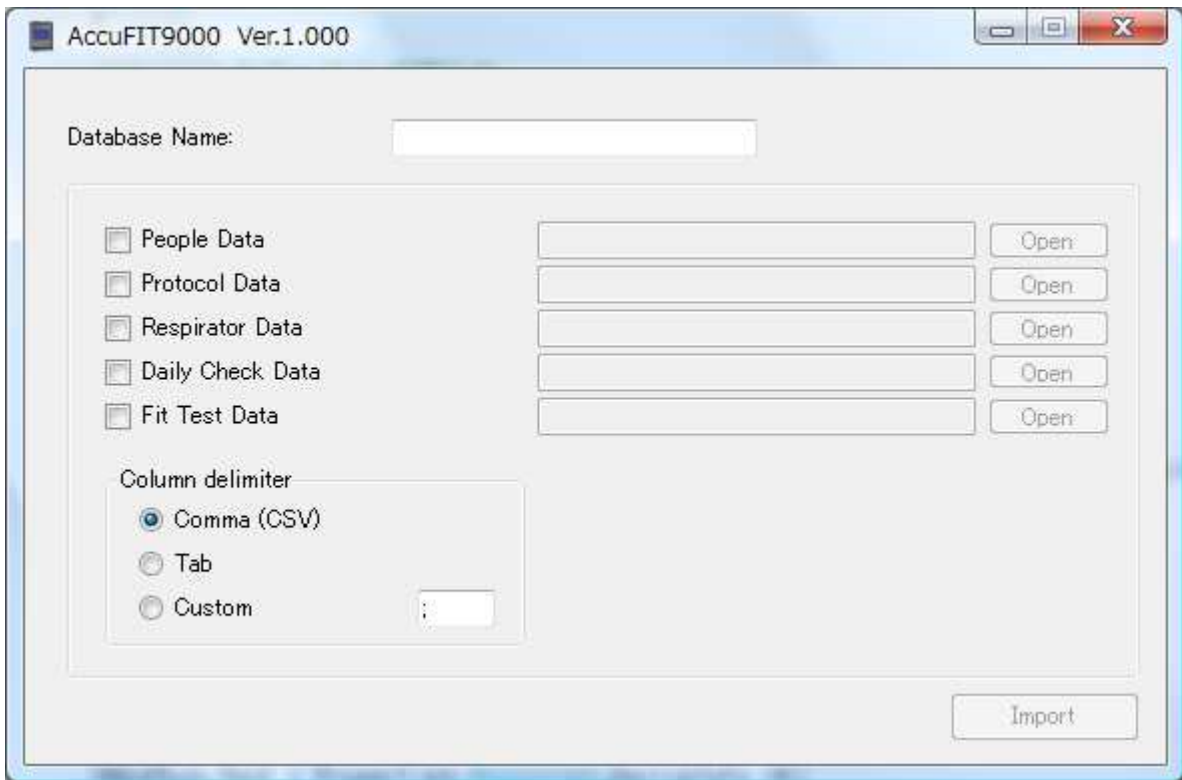
When the Software starts, this Main Screen appears.



(1)	Database Name	Enter a database name you create.
(2)	People Data	To import People data, select the check box of People Data, and choose a file you wish to import.
(3)	Protocol Data	To import Protocol data, select the check box of Protocol Data, and choose a file you wish to import.
(4)	Respirator Data	To import Respirator data, select the check box of Respirator data, and choose a file you wish to import.
(5)	Daily Check Data	To import Daily Check data, select the check box of Daily Check Data, and choose a file you wish to import.
(6)	Fit Test Data	To import Fit Test data, select the check box of Fit Test Data, and choose a file you wish to import.
(7)	Column delimiter	Select a column delimiter when you have exported on the FitPro+.

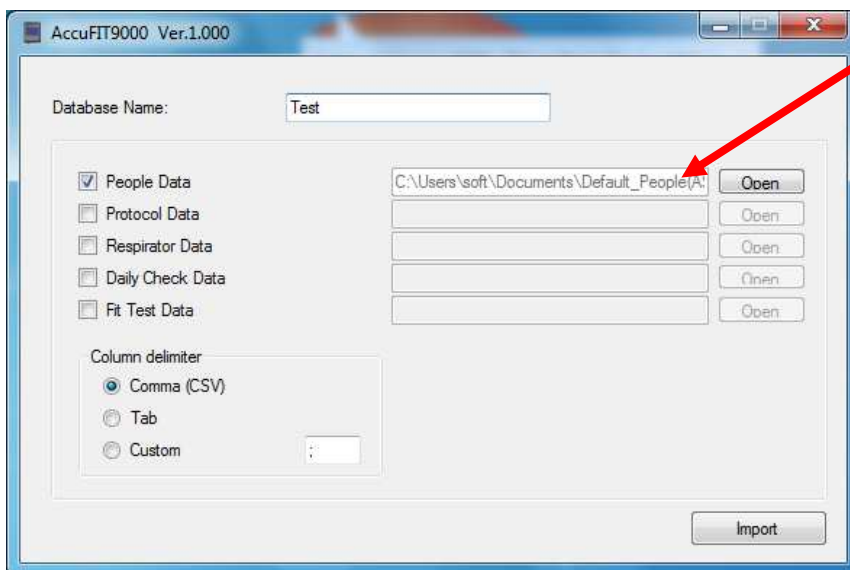
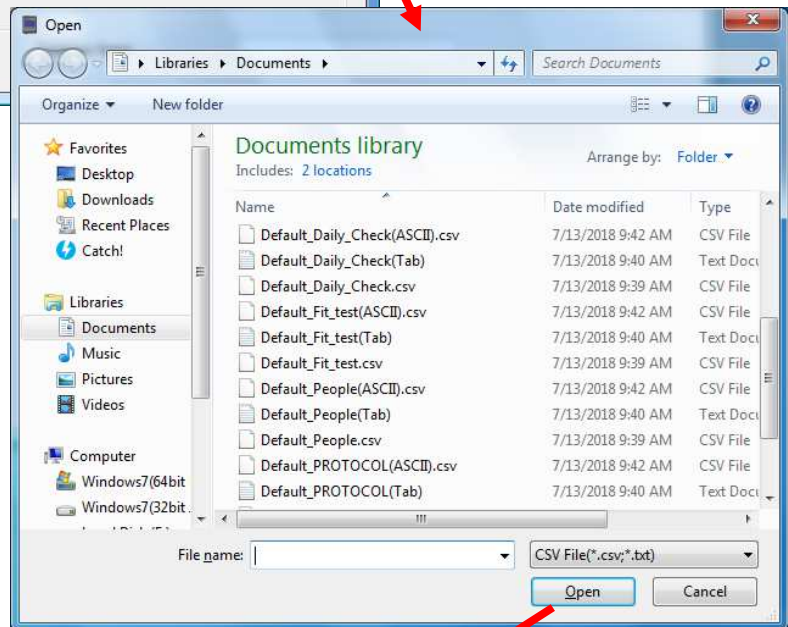
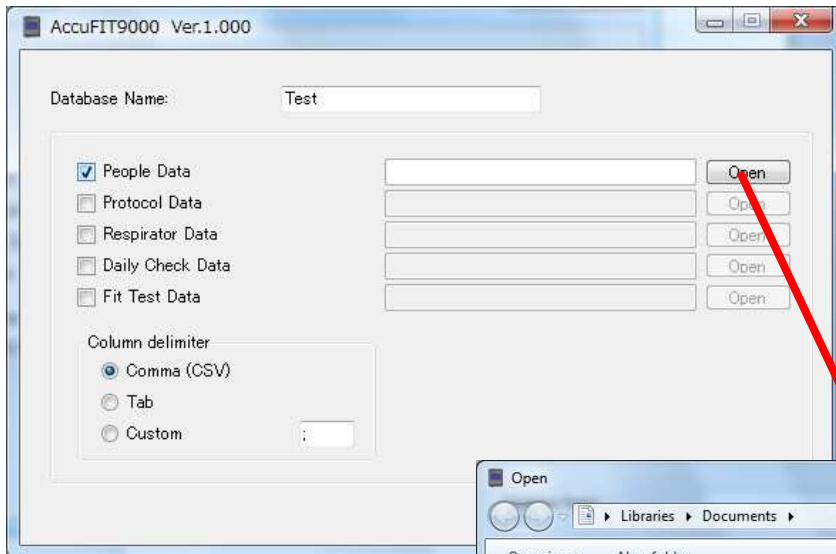
***As to from (2) to (6), you can select optional items you wish to import.**

4. Data Importing



- **Database Name:** Enter a name of database you are going to create from an imported CSV file. Database will be stored in Document¥AccuFit9000.

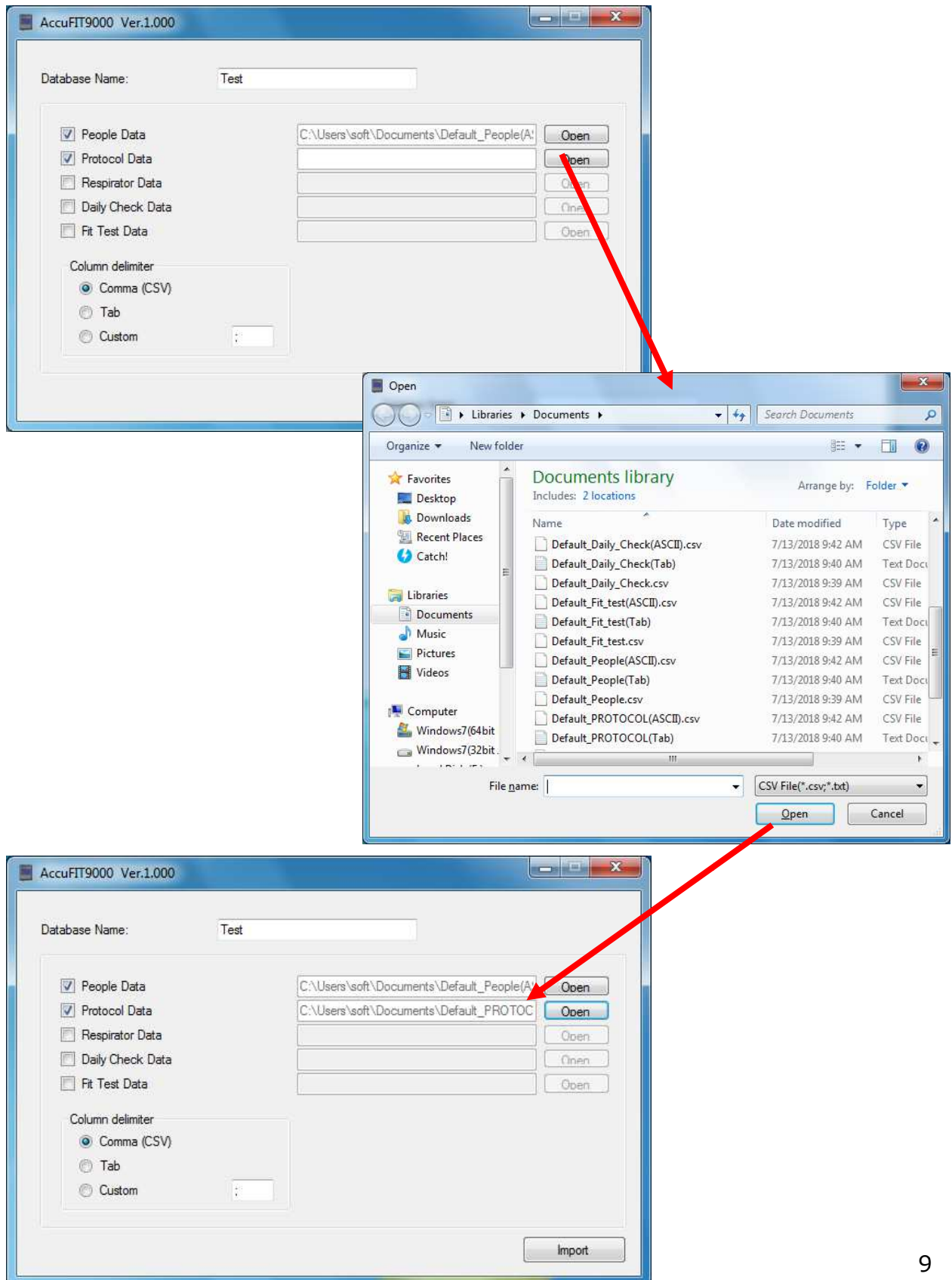
- **People Data:** To import People data, select the check box of People Data.
Click the **Open** button to open a dialog box.
Select a CSV file of People data exported from the FitPro+ to open the file.



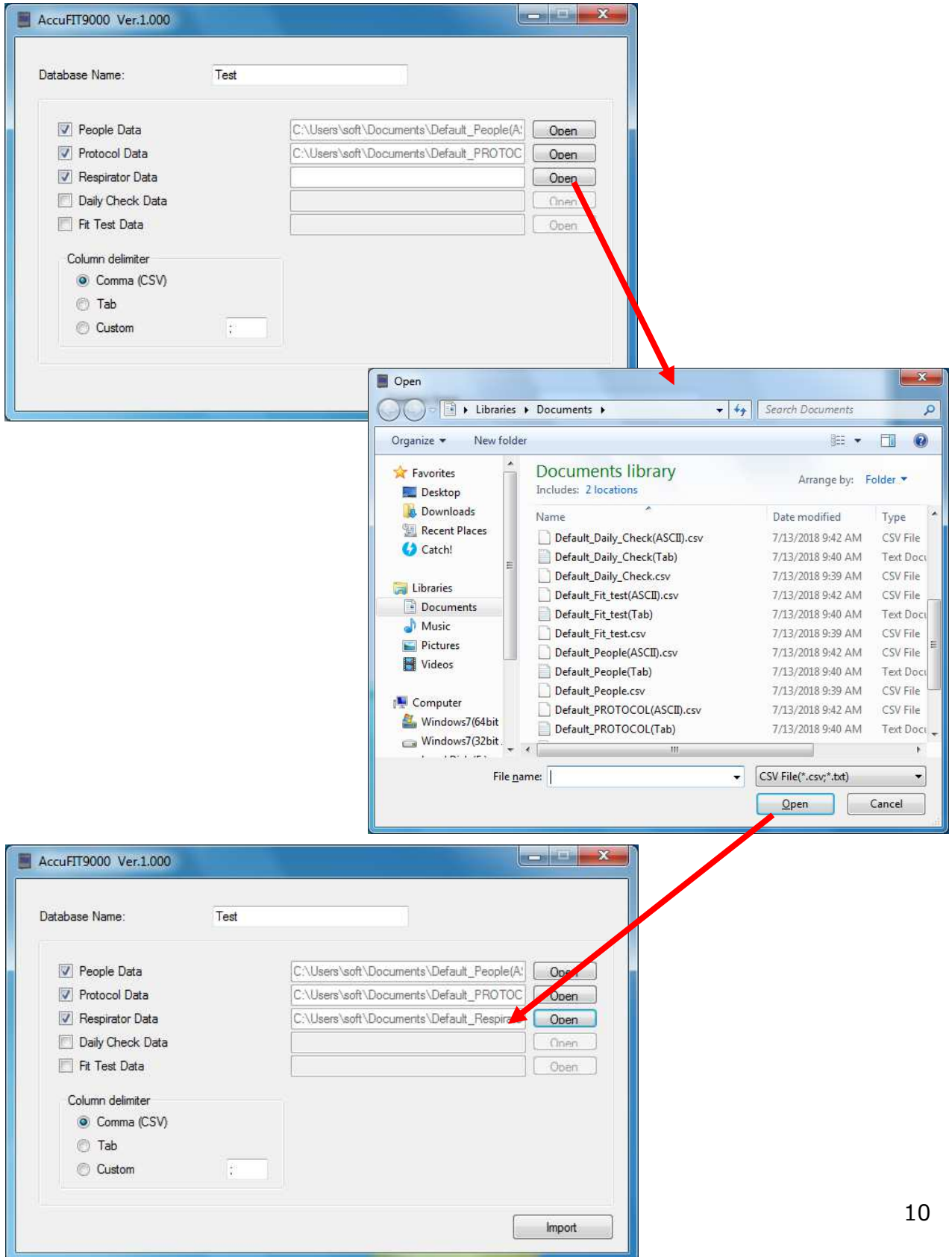
• **Protocol Data:** To import Protocol data, select the check box of Protocol Data.

Click the **Open** button to open a dialog box.

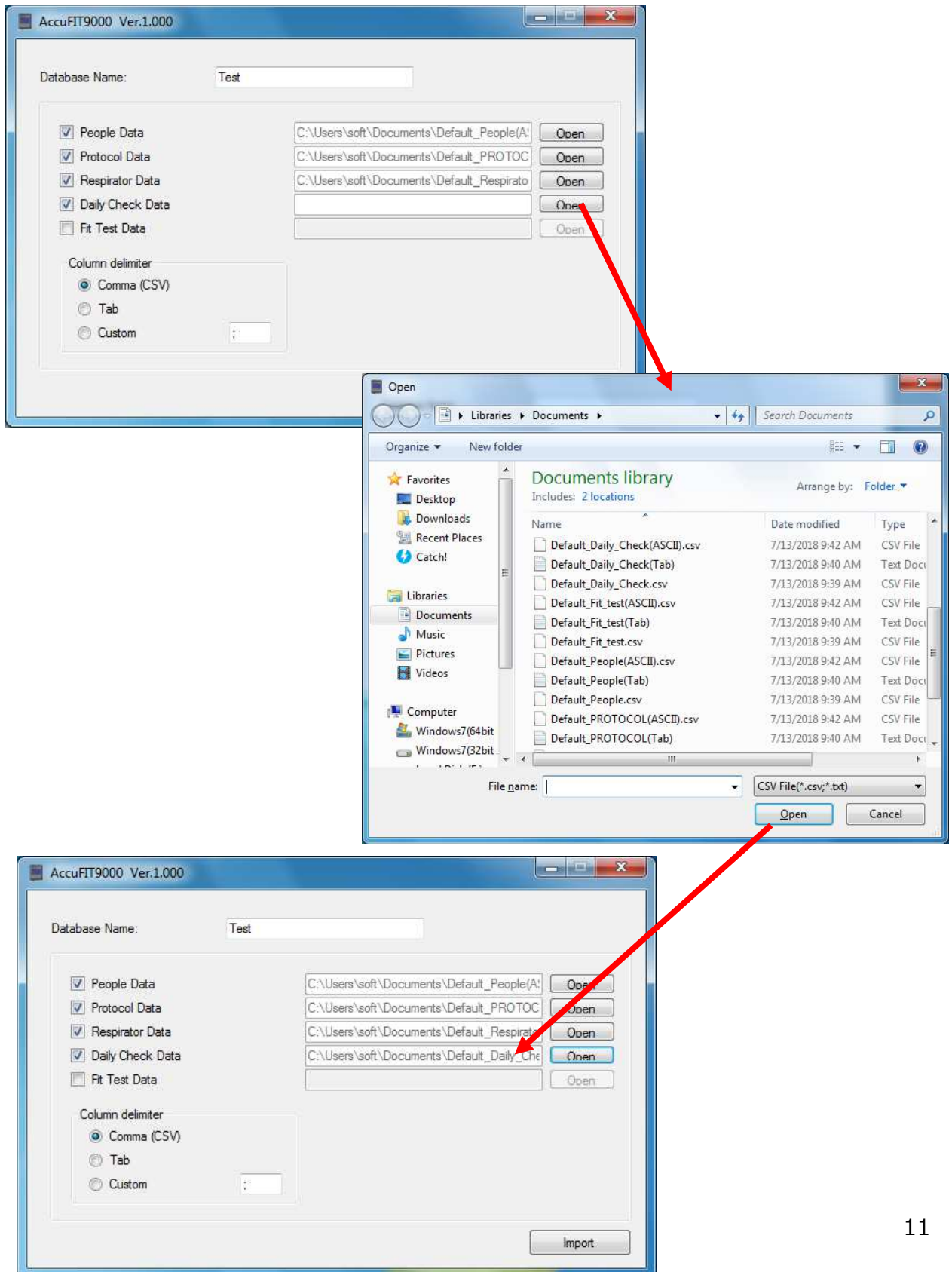
Select a CSV file of Protocol data exported from the FitPro+ to open the file.



- **Respirator Data:** To import Respirator data, select the check box of Respirator Data. Click the **Open** button to open a dialog box. Select a CSV file of Respirator data exported from the FitPro+ to open the file.



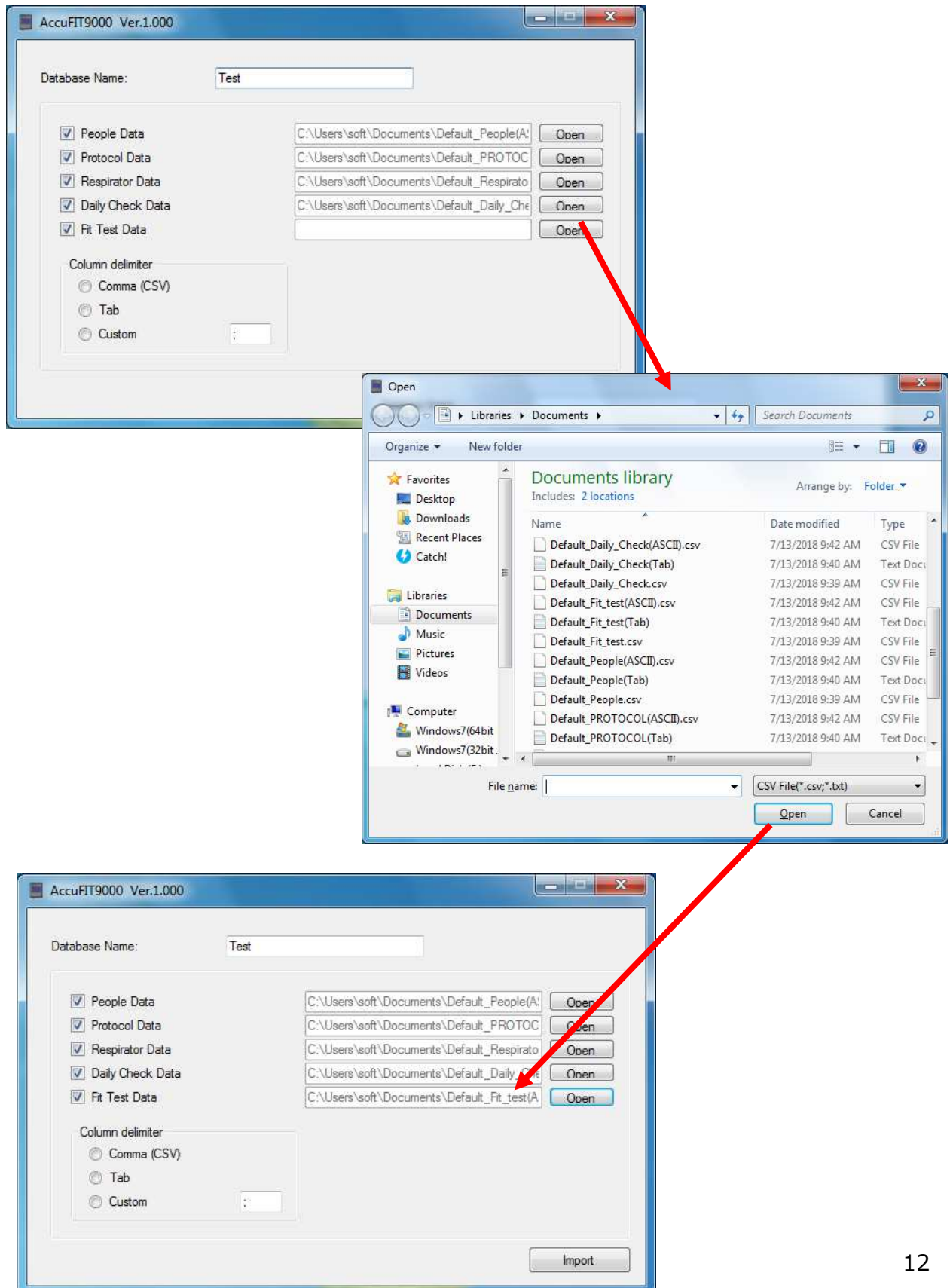
- **Daily Check Data:** To import Daily Check Data, select the check box of Daily Check Data. Click the **Open** button to open a dialog box. Select a CSV file of Daily Check Data exported from the FitPro+ to open the file.



• **Fit Test Data:** To import Fit Test Data, select the check box of Fit Test Data.

Click the **Open** button to open a dialog box.

Select a CSV file of Fit Test Data exported from the FitPro+ to open the file.



•**Column delimiter:** Select the same column delimiter as you have exported on the FitPro+.
If you select a different column delimiter, you cannot import data.

•**Import Button:** Start importing data, and create a database with the same file name you have entered the Database Name. If database already has the same file name, the message "Do you want to create a new data?" appears. To create a new data, click **Yes** button. When you want to overwrite, click **No** button.

5. Contact Information



AccuTec-IHS, Inc.

1408 South Denver Ave Tulsa, OK 74119, USA

TEL: (918)-984-9838

URL: <https://www.accutec-ihs.com/>

E-Mail: info@accutec-ihs.com